



PROFILING MOLDOVAN Victims of Trafficking

**SIX YEARS OF IOM
EXPERIENCE**

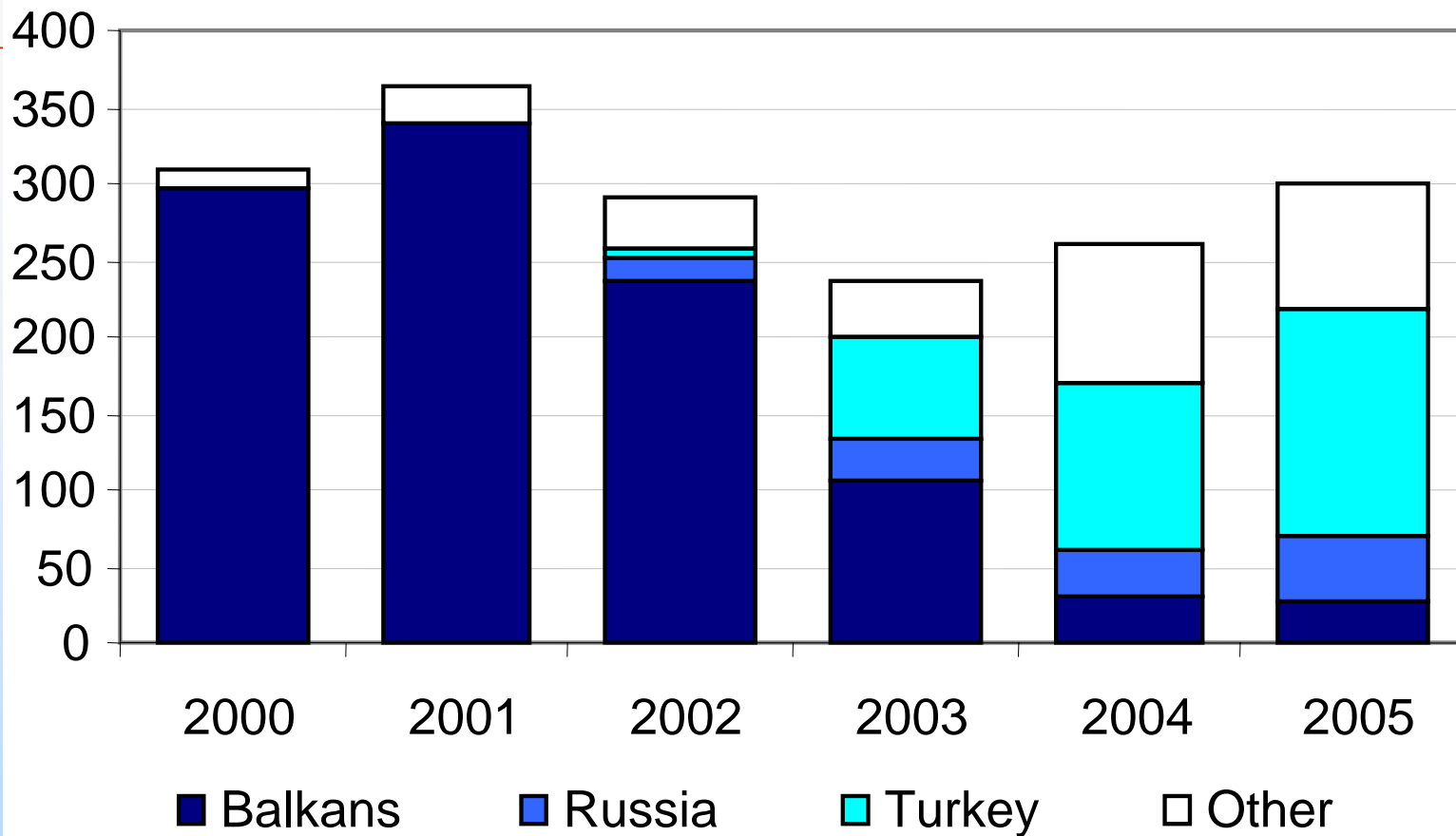


INTRODUCTION

- The statistical data analysis provided in this presentation is based on detailed interviews with the beneficiaries assisted within IOM Moldova's CT Rehabilitation and Reintegration Programme.
- Database includes information on the number of VoTs assisted, country of destination, age, travel route, and the manner in which they were trafficked.
- Why collect data: improve understanding of the causes, processes, trends and consequences of trafficking; monitoring of assistance
- Direct Assistance Program: Rehabilitation (two wings) and Reintegration
- Charts include mostly data from 2004 and 2005: comparative analyses

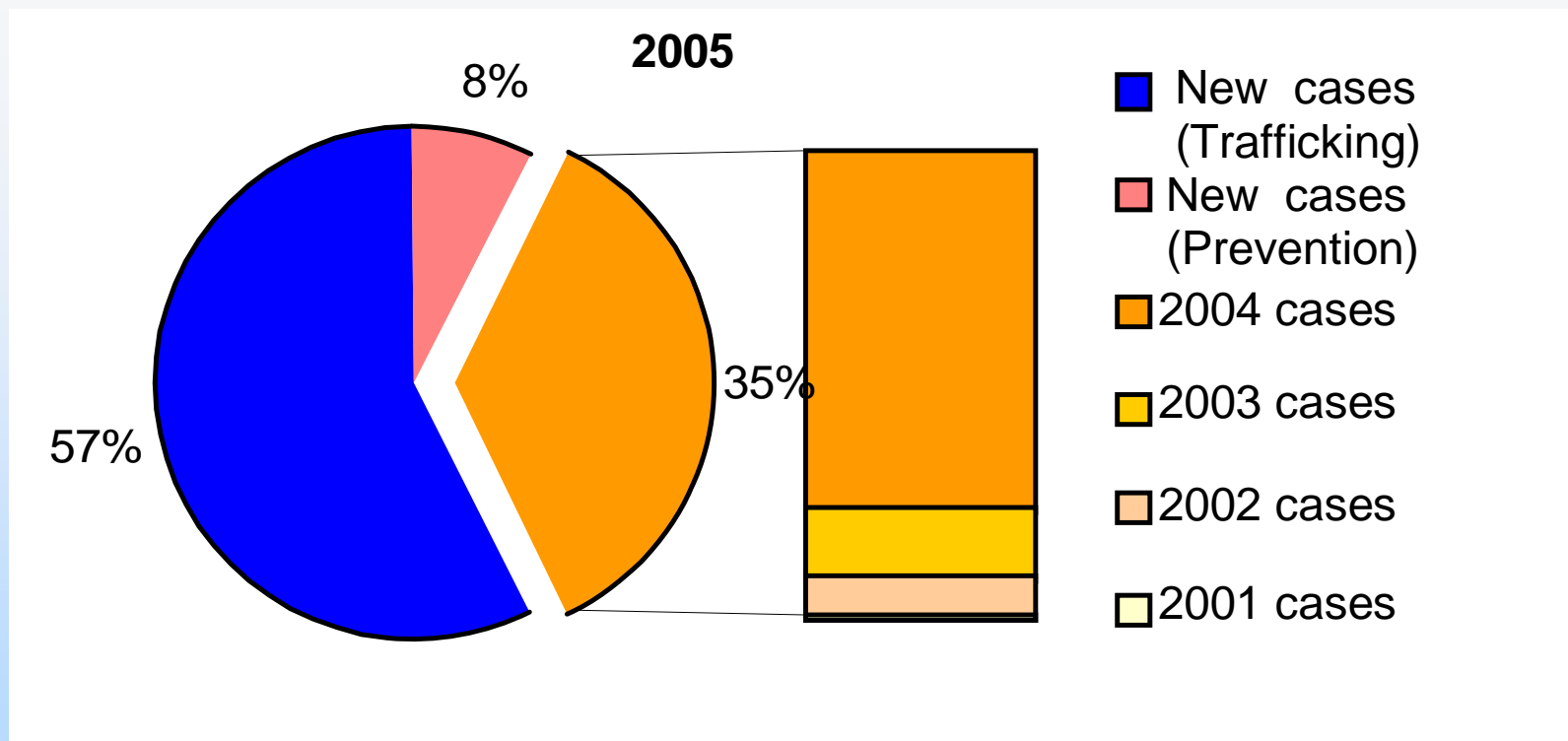


Number of assisted cases by sending country



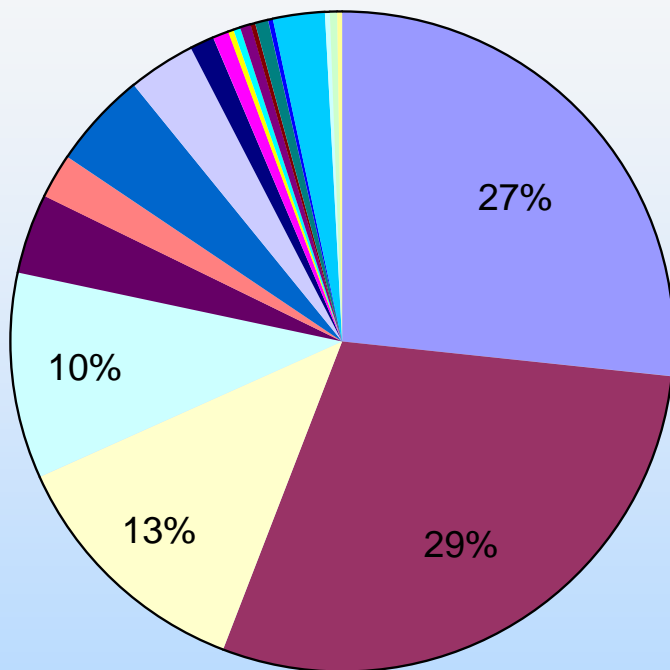


Victims of Trafficking assisted by IOM





Referring Agencies

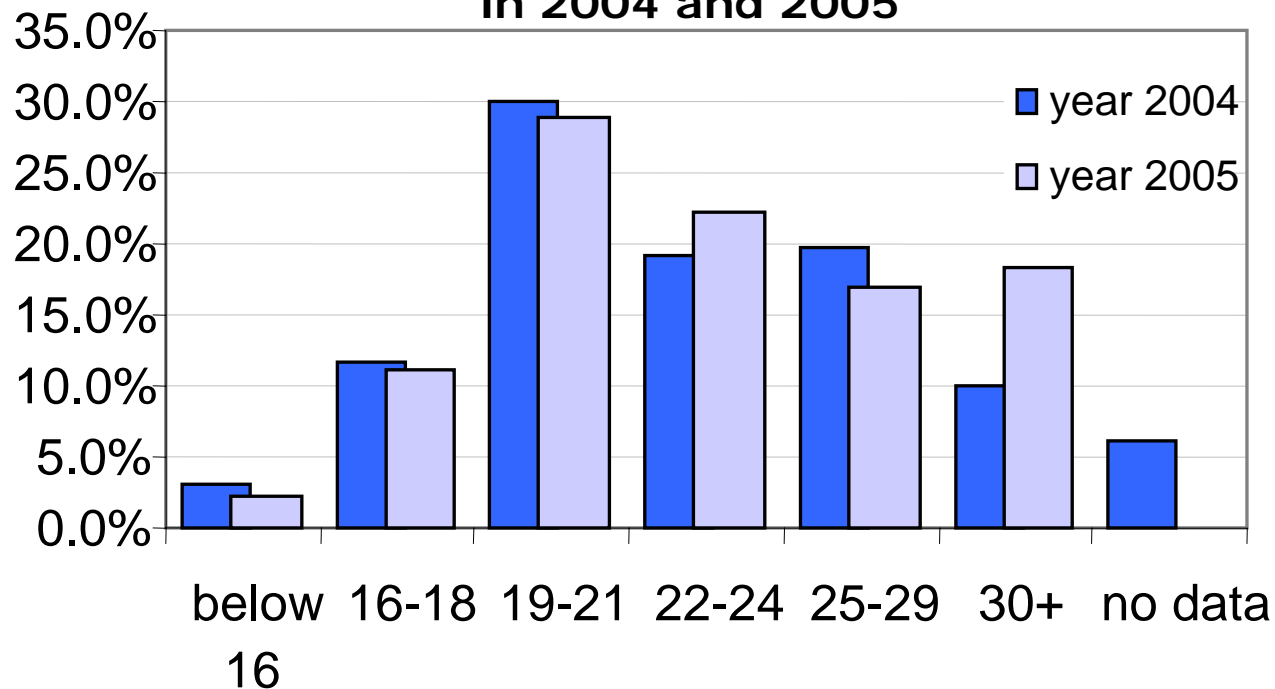


- Isha L'Isha
- Amicul
- Compassiune
- Interaction
- Save the Children
- Maternity Centre
- Gavroche House
- Vatra
- Ministry of Health
- Orphanage
- IOM
- FHL
- Law enforcement
- CPTW
- La Strada
- AWCS
- Contact
- Self-referral
- Gencliar Birlii



Victims of trafficking: who are they?

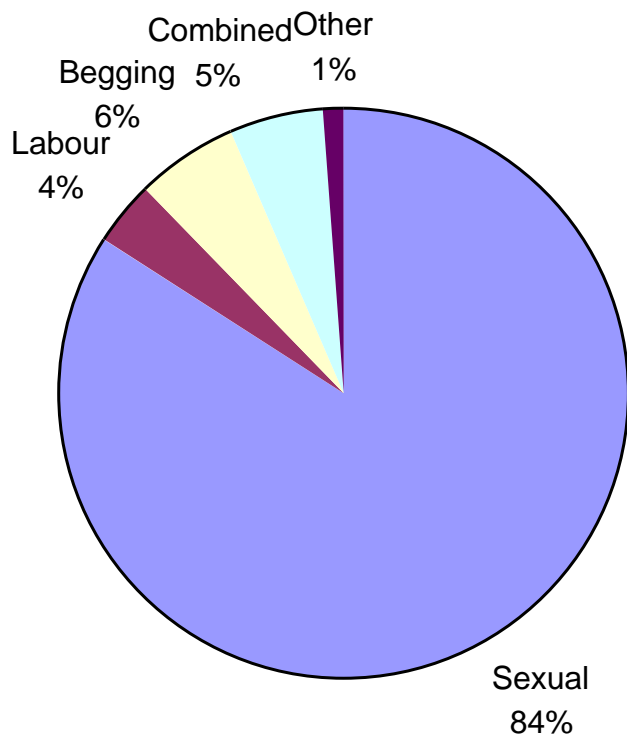
Distribution by age of victims assisted by IOM
in 2004 and 2005



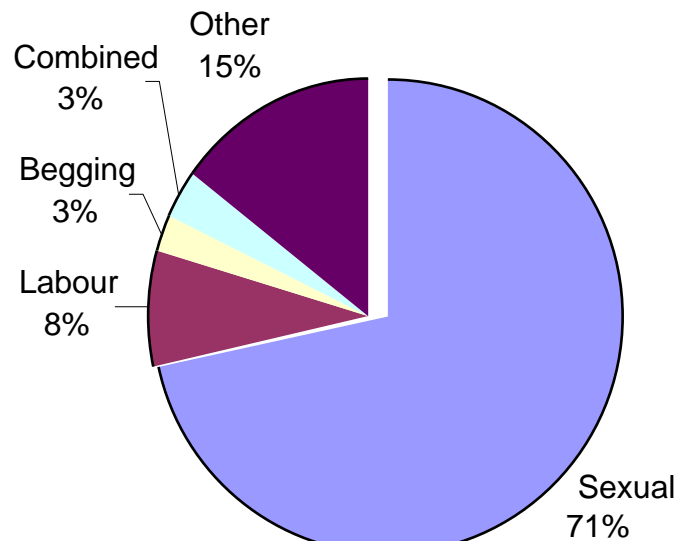


Types of exploitation

2004 Caseload

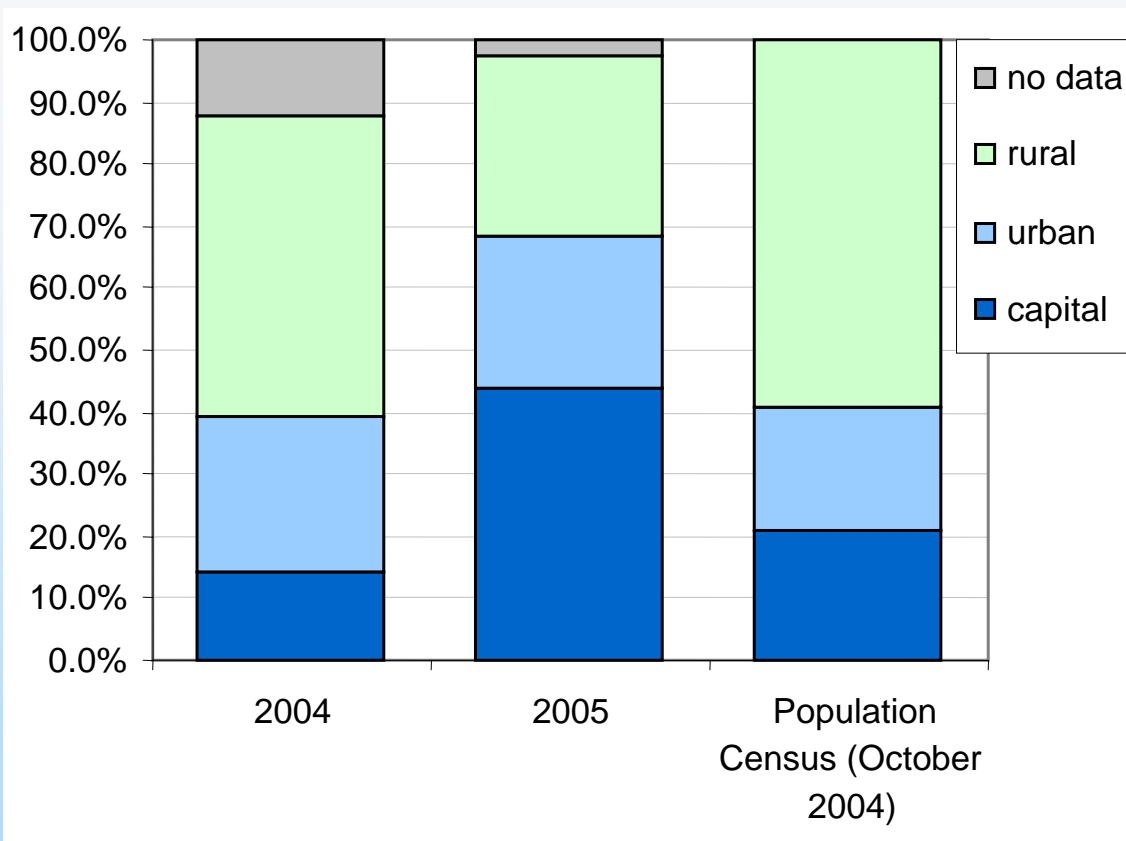


2005 Caseload



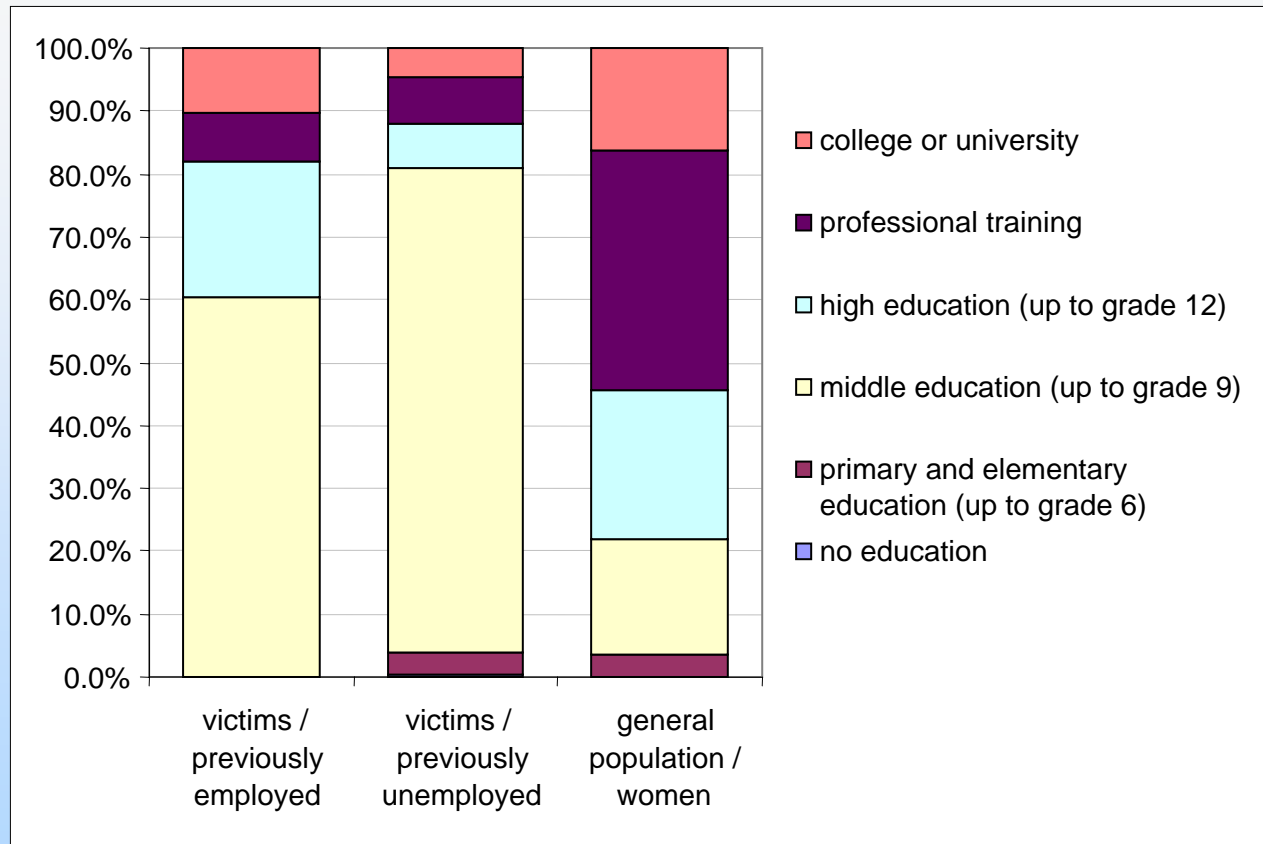


Area of residence



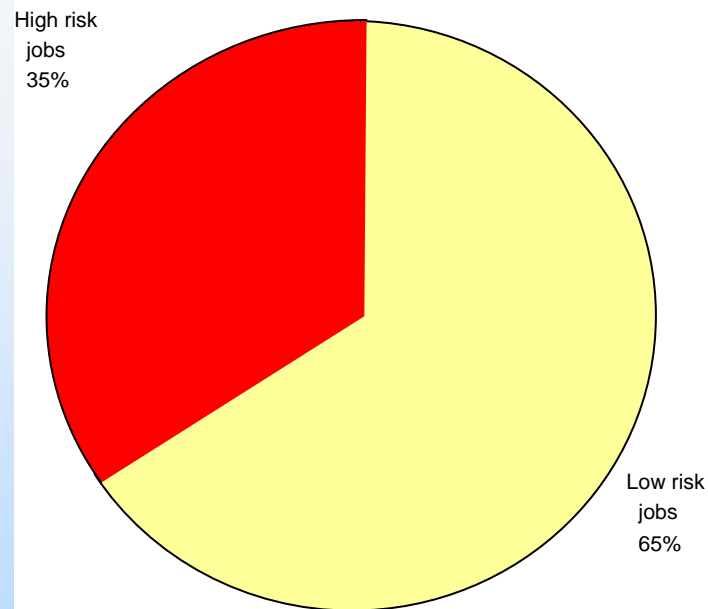
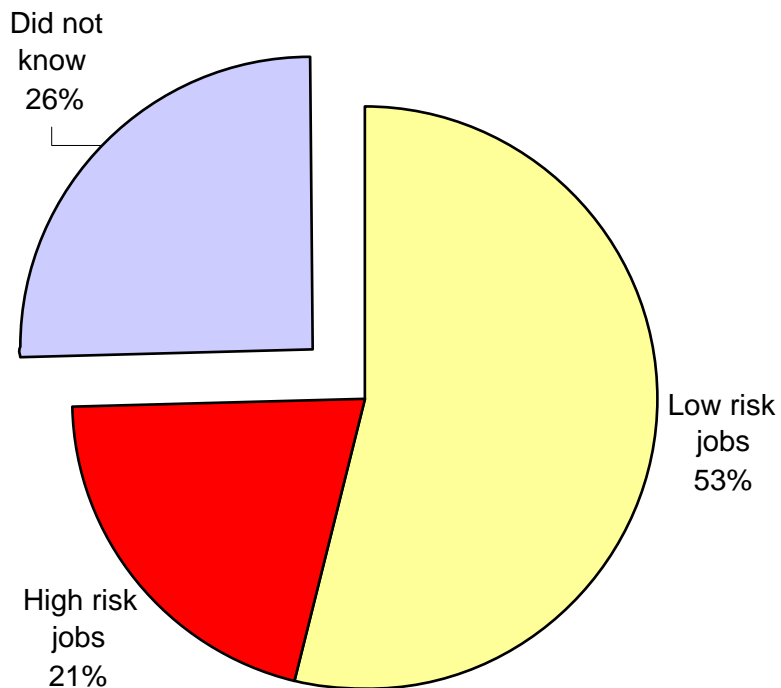


Education





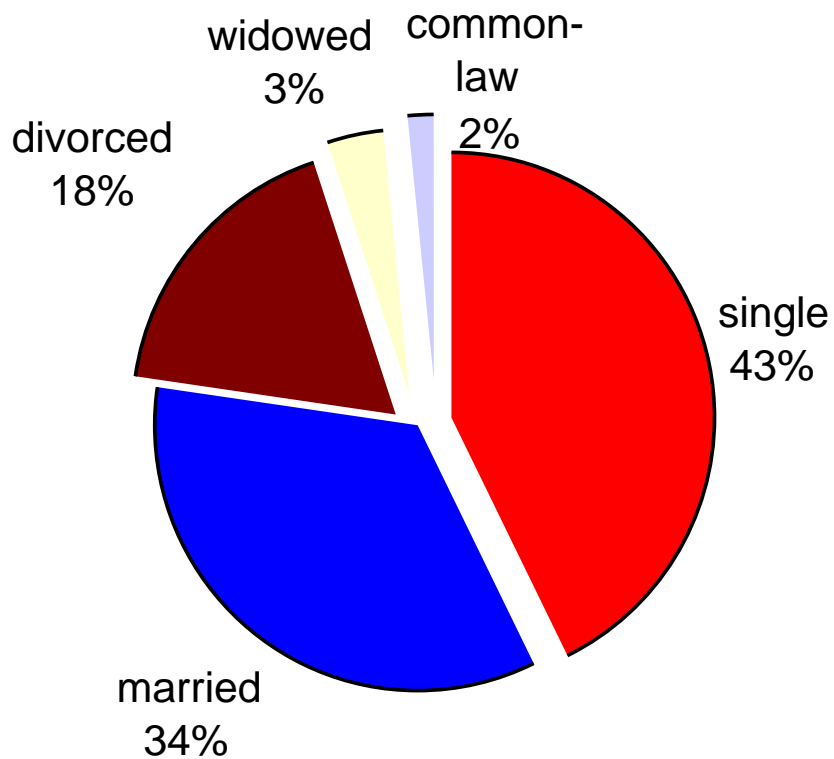
Reason for going abroad



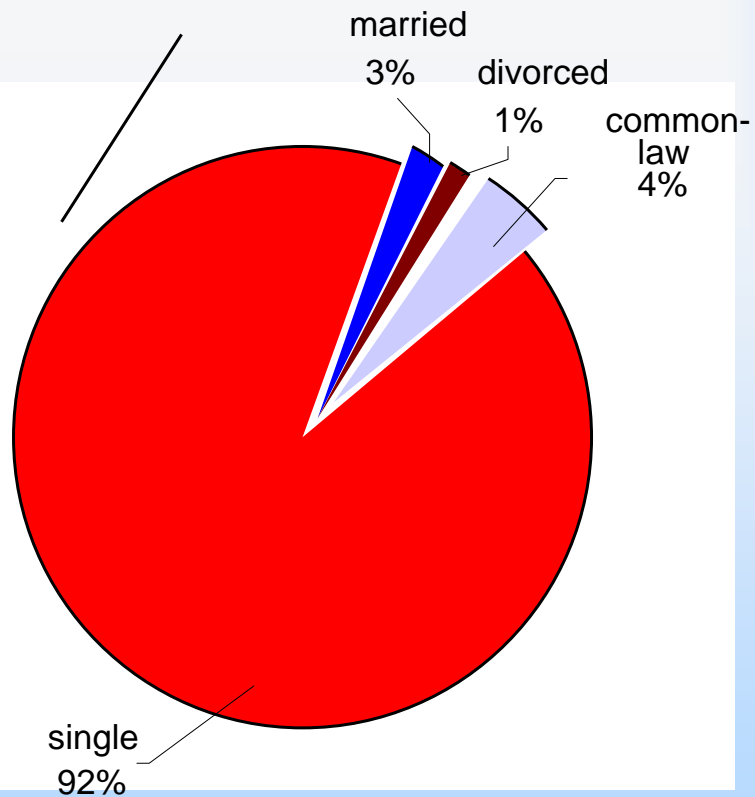


Marital status

with children

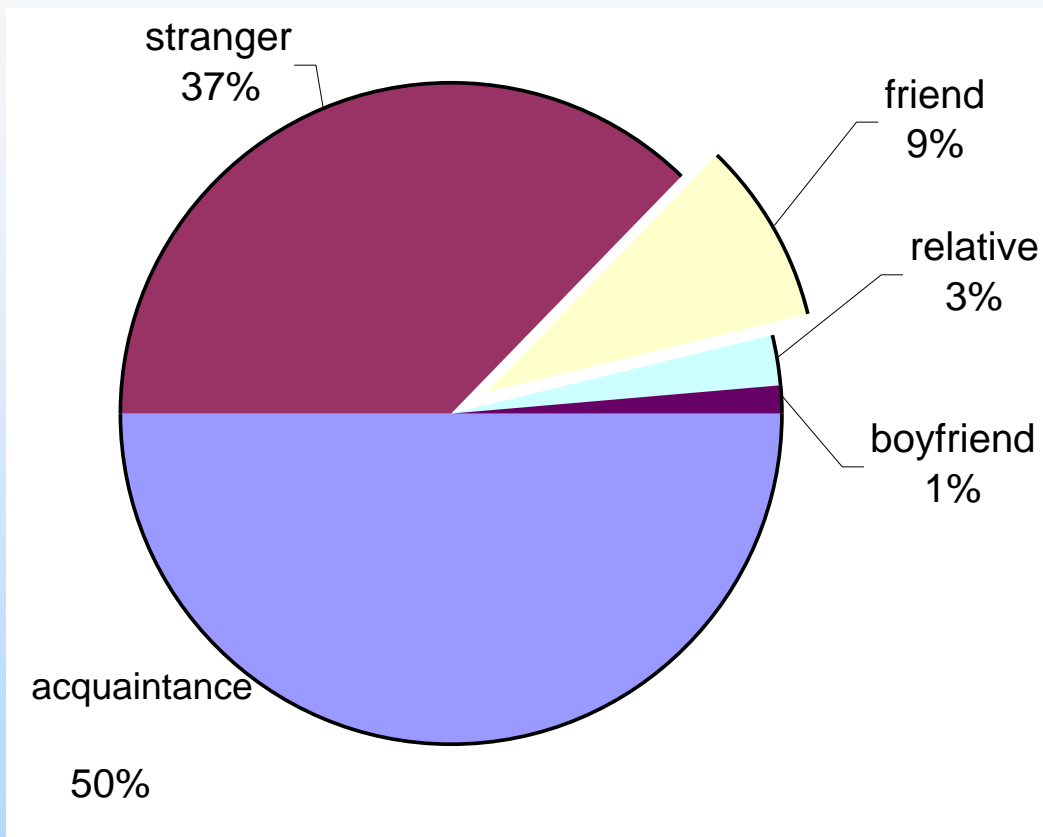


without children



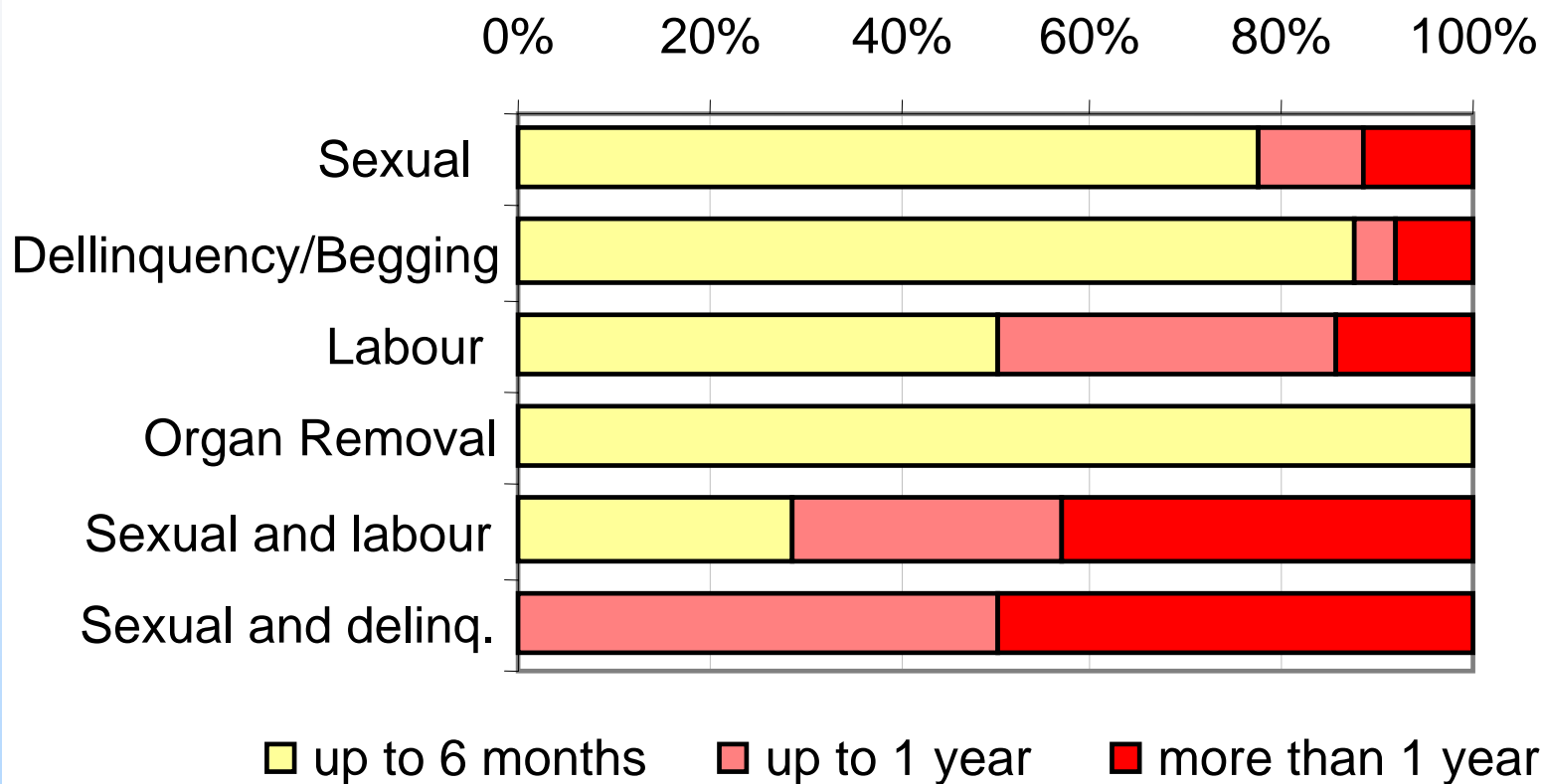


Victim's relationship with recruiter



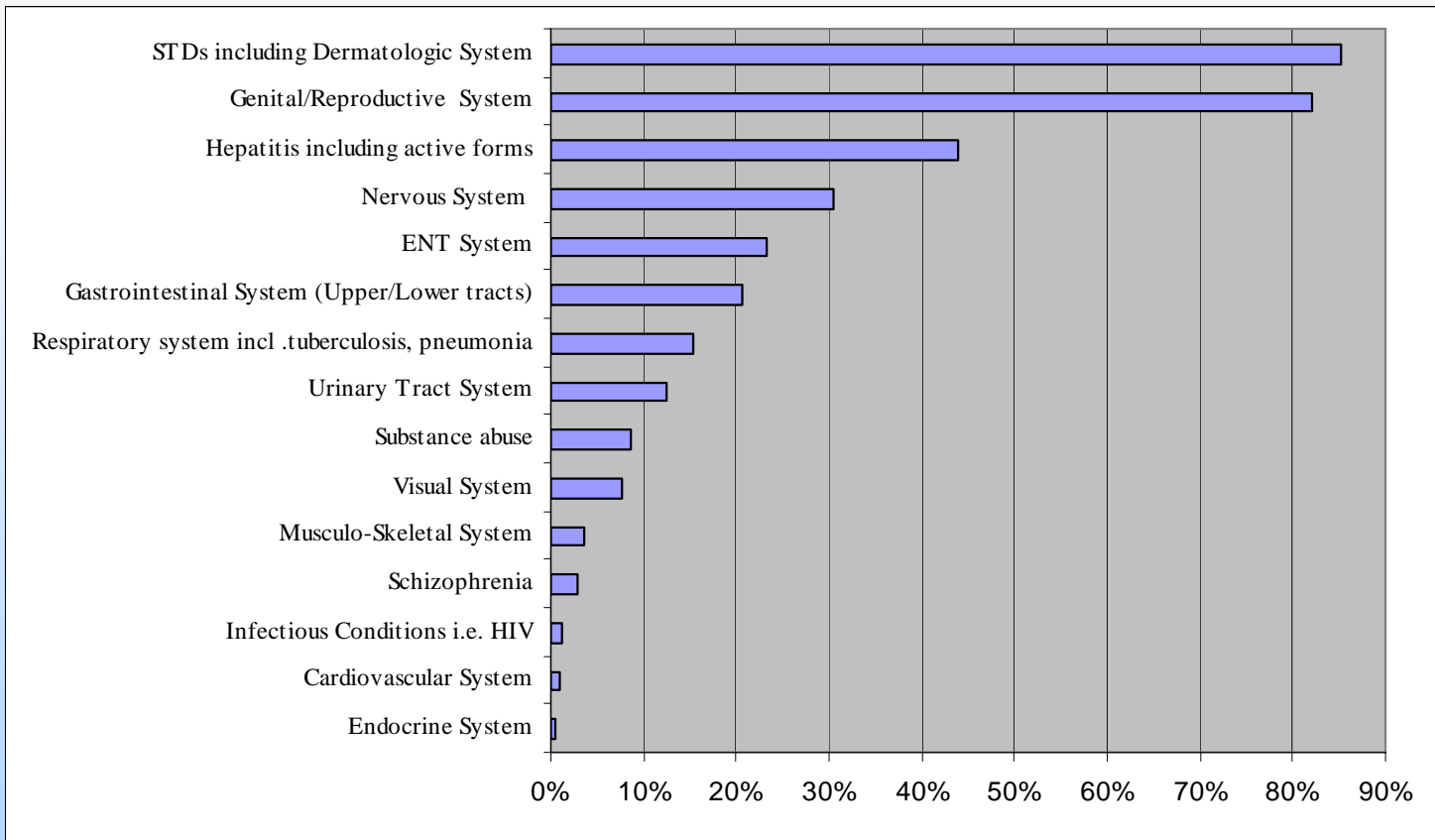


Time spent in trafficking





Health status of victims of trafficking





Health status of victims of trafficking

